



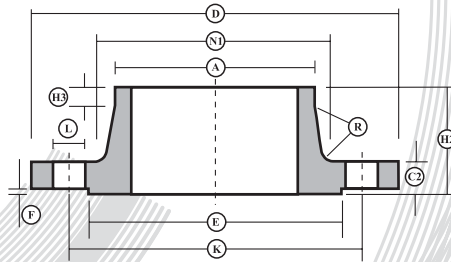
# STAINLESS STEEL AND NICKEL ALLOY FLANGES

BS4504 :  
Section: Part 1:1969



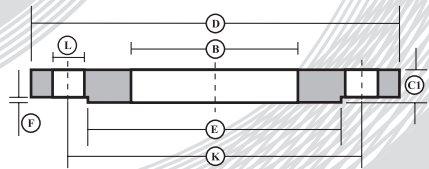


2.5/2  
6/2



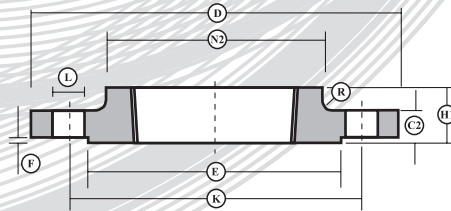
Steel Welding Neck Flange

2.5/3  
6/3



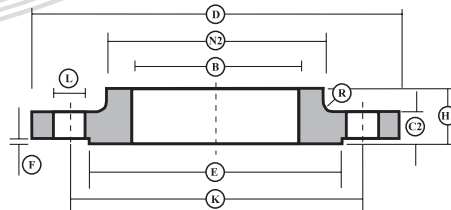
Steel Plate Slip-on Flange

6/4



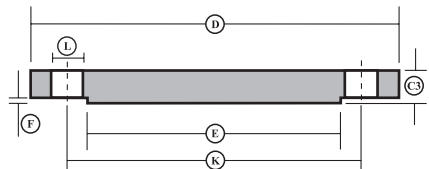
Screwed Boss Flange

6/5



Slip-on Boss Flange

6/8



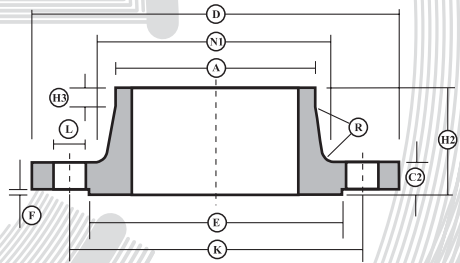
Steel Plate Blind Flange

N B Size	INS	MM	D	C1	C2	C3	F	E	B	H1	H2	H3	N1	N2	A	K	R	L	No. Holes
3/8	10	75	12	12	12	2	35	18.2	20	28	6	26	25	17.2	50	3	11	4	
1/2	15	80	12	12	12	2	40	22.4	20	30	6	30	30	21.3	55	3	11	4	
3/4	20	90	14	14	14	2	50	27.7	24	32	6	38	40	26.9	65	4	11	4	
1	25	100	14	14	14	2	60	34.5	24	35	6	42	50	33.7	75	4	11	4	
1 1/4	32	120	16	14	14	2	70	43.2	26	35	6	55	60	42.4	90	5	14	4	
1 1/2	40	130	16	14	14	3	80	49.5	26	38	7	62	70	48.3	100	5	14	4	
2	50	140	16	14	14	3	90	62	28	38	8	74	80	60.3	110	5	14	4	
2 1/2	65	160	16	14	14	3	110	74.7	32	38	9	88	100	76.1	130	6	14	4	
3	80	190	18	16	16	3	128	90.7	34	42	10	102	110	88.9	150	6	18	4	
4	100	210	18	16	16	3	148	116.1	40	45	10	130	130	114.3	170	6	18	4	
5	125	240	20	18	18	3	178	143.8	44	48	10	155	160	139.7	200	6	18	8	
6	150	265	20	18	18	3	202	170.7	44	48	12	184	185	168.3	225	8	18	8	
8	200	320	22	20	20	3	258	221.5	44	55	15	236	240	219.1	280	8	18	8	
10	250	375	24	22	22	3	312	276.4	44	60	15	290	295	273	335	10	18	12	
12	300	440	24	22	22	4	365	327.2	44	62	15	342	355	323.9	395	10	22	12	
14	350	490	26	22	22	4	415	359.2	-	62	15	385	-	355.6	445	10	22	12	
16	400	540	28	22	22	4	465	410.5	-	65	15	438	-	406.4	495	10	22	16	
18	450	595	30	24	24	4	520	461.8	-	65	15	492	-	457	550	12	22	16	
20	500	645	30	24	24	4	570	513.1	-	68	15	538	-	508	600	12	22	20	
24	600	755	32	24	34	5	670	616	-	70	16	640	-	610	705	12	26	20	

# BS4504: Part 1: 1969

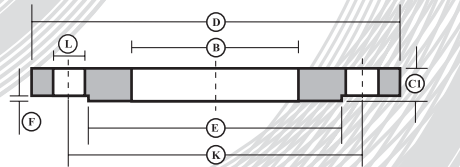
## Dimensions of Nominal Pressure 10 & 16 Flanges

10/2  
16/2



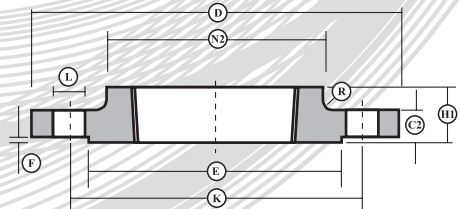
Steel Welding Neck Flange

10/3  
16/3



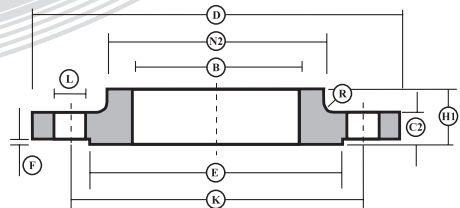
Steel Plate Slip-on Flange

16/4



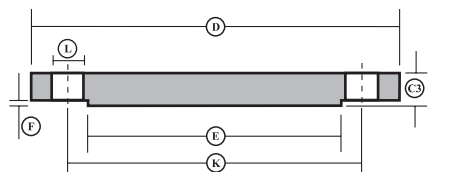
Screwed Boss Flange

10/5  
16/5



Slip-on Boss Flange

10/8  
16/8



Steel Plate Blind Flange

## BS4504: Part 1: 1969

### Dimensions of Nominal Pressure 10 Flanges

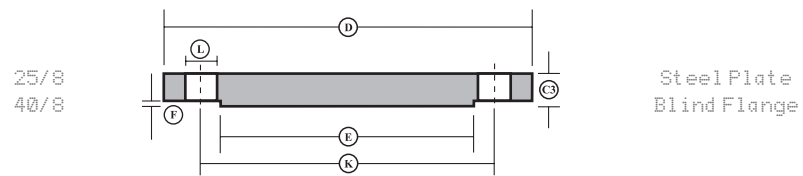
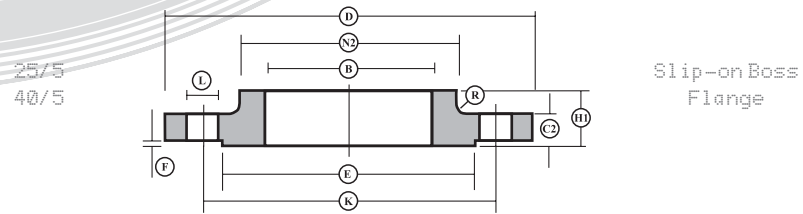
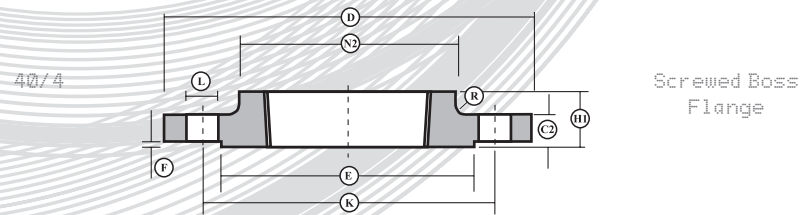
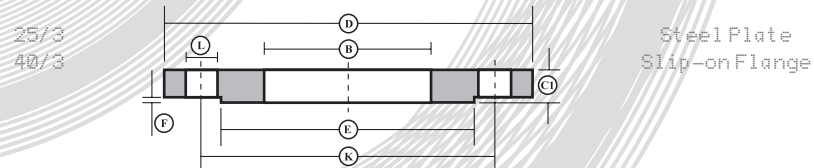
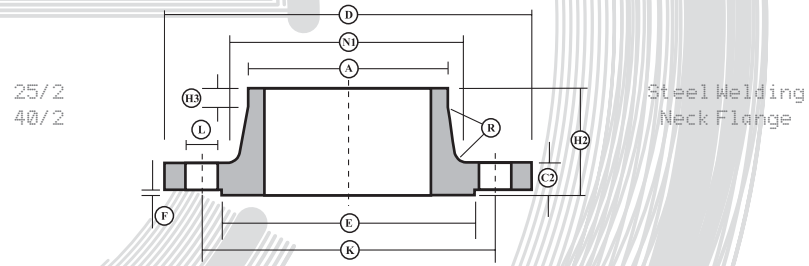
N B Size	D	C1	C2	C3	F	E	B	H1	H2	H3	N1	N2	A	G	K	R	L	No. Holes
8 200	340	24	24	24	3	268	221.5	44	62	16	235	247	219.1	190	295	10	22	8
10 250	395	26	26	26	3	320	276.4	46	68	16	292	292	273	237	350	12	22	12
12 300	445	26	26	26	4	370	327.2	46	68	16	344	344	323.9	285	400	12	22	12
14 350	505	28	26	26	4	430	359.2	-	68	16	385	-	355.6	332	460	12	22	16
16 400	565	32	26	26	4	482	410.5	-	72	16	440	-	406.4	380	515	12	26	16
18 450	615	36	28	28	4	532	461.8	-	72	16	492	-	457.2	428	565	12	26	20
20 500	670	38	28	28	4	585	513.1	-	75	16	542	-	508	475	620	12	26	20
24 600	780	42	28	-	5	685	616	-	80	18	642	-	609.6	-	725	12	30	20

Note: For sizes 10mm - 150mm nominal bore use Nominal Pressure 16 dimensions

## BS4504: Part 1: 1969

### Dimensions of Nominal Pressure 16 Flanges

N B Size	D	C1	C2	C3	F	E	B	H1	H2	H3	N1	N2	A	K	R	L	Holes	No.
3/8 10	90	14	14	14	2	40	18.2	20	35	6	28	30	17.2	60	4	14	4	
1/2 15	95	14	14	14	2	45	22.4	20	35	6	32	35	21.3	65	4	14	4	
3/4 20	105	16	16	16	2	58	27.7	24	38	6	39	45	26.9	75	4	14	4	
1 25	115	16	16	16	2	68	34.5	24	38	6	46	52	33.7	85	4	14	4	
1 1/4 32	140	16	16	16	2	78	43.2	26	40	6	56	60	42.4	100	6	18	4	
1 1/2 40	150	16	16	16	3	88	49.5	26	42	7	64	70	48.3	110	6	18	4	
2 50	165	18	18	18	3	102	62	28	45	8	74	84	60.3	125	6	18	4	
2 1/2 65	185	18	18	18	3	122	74.7	32	45	10	92	104	76.1	145	6	18	4	
3 80	200	20	20	20	3	138	90.7	34	50	10	110	118	88.9	160	8	18	8	
4 100	220	20	20	20	3	158	116.1	40	52	12	130	140	114.3	180	8	18	8	
5 125	250	22	22	22	3	188	143.8	44	55	12	158	168	139.7	210	8	18	8	
6 150	285	22	22	22	3	212	170.7	44	55	12	184	195	168.3	240	10	22	8	
7 175	315	24	24	24	3	242	-	60	12	210	-	193.7	270	10	22	8		
8 200	340	24	24	24	3	268	221.5	44	62	16	234	246	219.1	295	10	22	12	
10 250	405	26	26	26	3	320	276.4	46	70	16	288	298	273	355	12	26	12	
12 300	460	28	28	28	4	378	327.2	46	78	16	342	350	323.9	410	12	26	12	
14 350	520	32	30	30	4	438	359.2	-	82	16	390	400	355.6	470	12	26	16	
16 400	580	36	32	32	4	490	410.5	-	85	16	444	456	406.4	525	12	30	16	
18 450	640	40	34	34	4	550	461.8	-	87	16	490	502	457.2	585	12	30	20	
20 500	715	44	34	36	4	610	513.1	-	90	16	546	559	508	650	12	33	20	
24 600	840	52	36	-	5	725	616	-	95	18	650	658	609.6	770	12	36	20	



BS4504: Part 1: 1969

Dimensions of Nominal Pressure 25 Flanges

N B Size INS	MM	D	C1	C2	C3	F	E	B	H1	H2	H3	N1	N2	A	G	K	X	Y	R	L	No. Holes
7	175	330	26	28	28	3	248	-	-	75	15	218	-	193.7	165	280	-	-	10	26	12
8	200	360	28	30	30	3	278	221.5	52	80	16	244	256	219.1	190	310	360	32	10	26	12
10	250	425	32	32	32	3	335	276.4	60	88	18	298	310	273	237	370	425	40	12	30	12
12	300	485	38	34	34	4	395	327.2	67	92	18	352	364	323.9	285	430	485	48	12	30	16
14	350	555	42	38	38	4	450	359.2	-	100	20	398	-	355.6	332	490	-	-	12	33	16
16	400	620	46	40	40	4	505	410.5	-	110	20	452	-	406.4	380	550	-	-	12	36	16
18	450	670	52	42	42	4	555	461.8	-	110	20	505	-	457.2	425	600	-	-	12	36	20
20	500	730	58	44	45	4	615	513.1	-	125	20	558	-	508	475	660	-	-	12	36	20
24	600	845	66	46	-	5	720	616	-	125	20	660	-	609.6	-	770	-	-	12	39	20

Note: For sizes 10mm - 150mm nominal bore use Nominal Pressure 40 dimensions

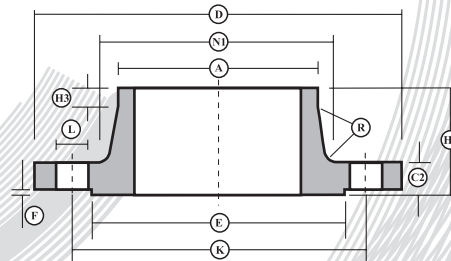
BS4504: Part 1: 1969

Dimensions of Nominal Pressure 40 Flanges

N B Size INS	MM	D	C1	C2	C3	F	E	B	H1	H2	H3	N1	N2	A	K	X	Y	R	L	No. Holes
3/8	10	90	16	16	16	2	40	18.2	22	35	6	28	30	17.2	60	90	16	4	14	4
1/2	15	95	16	16	16	2	45	22.4	22	38	6	32	35	21.3	65	95	16	4	14	4
3/4	20	105	18	18	18	2	58	27.7	26	40	6	40	45	26.9	75	105	18	4	14	4
1	25	115	18	18	18	2	68	34.5	28	40	6	46	52	33.7	85	115	18	4	14	4
1 1/4	32	140	18	18	18	2	78	43.2	30	42	6	55	60	42.4	100	140	18	6	18	4
1 1/2	40	150	20	18	18	3	88	49.5	32	45	7	64	70	48.3	110	150	18	6	18	4
2	50	165	20	20	20	3	102	62	34	48	8	75	85	60.3	125	165	20	6	18	4
2 1/2	65	185	22	22	22	3	122	74.7	38	52	10	90	105	76.1	145	185	22	6	18	8
3	80	200	24	24	24	3	138	90.7	40	58	12	105	118	88.9	160	200	24	8	18	8
4	100	235	26	24	24	3	162	116.1	44	65	12	134	145	114.3	190	235	24	8	22	8
5	125	270	28	26	26	3	188	143.8	48	68	12	162	170	139.7	220	270	26	8	26	8
6	150	300	30	28	28	3	218	170.7	52	75	12	192	200	168.3	250	300	28	10	26	8
7	175	350	32	32	32	3	260	-	-	82	15	218	-	193.7	295	350	32	10	30	12
8	200	375	34	34	34	3	285	221.5	52	88	16	244	260	219.1	320	375	34	10	30	12
10	250	450	42	38	38	3	345	276.4	60	105	18	306	320	273	385	450	38	12	33	12
12	300	515	50	42	42	4	410	327.2	67	115	18	362	380	323.9	450	515	42	12	33	16
14	350	580	56	46	46	4	465	359.2	-	125	20	408	-	355.6	510	580	46	12	36	16
16	400	660	64	50	50	4	535	410.5	-	135	20	462	-	406.4	585	660	50	12	39	16
18	450	685	68	50	54	4	560	461.8	-	135	20	500	-	457.2	610	685	50	12	39	20
20	500	755	72	52	56	4	615	513.1	-	140	20	562	-	508	670	755	52	12	42	20

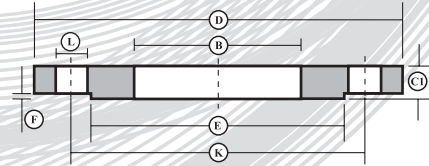


64/2  
100/2



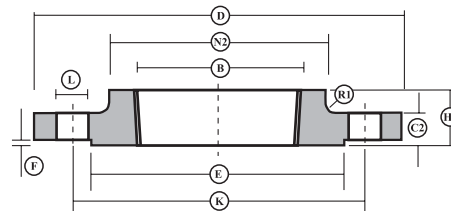
Steel Welding Neck Flange

64/3  
100/3



Steel Plate Slip-on Flange

64/4  
100/4



Screwed Boss Flange

BS4504: Part 1: 1969

Dimensions of Nominal Pressure 64 Flanges

N B Size INS MM	D	C1	C2	F	E	B	H1	H2	H3	N1	N2	A	K	R	R1	L	No. Holes
2 50	180	26	26	3	102	62	36	62	10	82	90	60.3	135	6	3	22	4
2 1/2 65	205	26	26	3	122	74.7	40	68	12	98	112	76.1	160	6	3	22	8
3 80	215	30	28	3	138	90.7	44	72	12	112	125	88.9	170	8	3	22	8
4 100	250	32	30	3	162	116.1	52	78	12	138	152	114.3	200	8	3	26	8
5 125	295	34	34	3	188	143.8	56	88	12	168	185	139.7	240	8	3	30	8
6 150	345	36	36	3	218	170.7	60	95	12	202	215	168.3	280	10	3	33	8
7 175	375	40	40	3	260	-	-	105	16	228	-	193.7	310	10	-	33	12
8 200	415	46	42	3	285	221.5	-	110	16	256	-	219.1	345	10	-	36	12
10 250	470	54	46	3	345	276.4	-	125	18	316	-	273	400	12	-	36	12
12 300	530	62	52	4	410	327.2	-	140	18	372	-	323.9	460	12	-	36	16
14 350	600	72	56	4	465	359.2	-	150	20	420	-	355.6	525	12	-	39	16
16 400	670	78	60	4	535	410.5	-	160	20	475	-	406.4	585	12	-	42	16

Note: For sizes 10mm - 40mm nominal bore use Nominal Pressure 100 dimensions

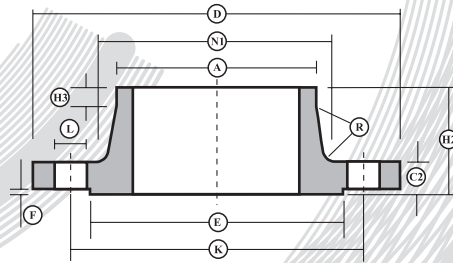
BS4504: Part 1: 1969

Dimensions of Nominal Pressure 100 Flanges

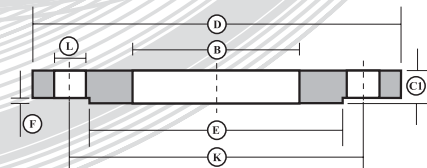
N B Size INS MM	D	C1	C2	F	E	B	H1	H2	H3	N1	N2	A	K	R	R1	L	No. Holes
3/8 10	100	20	20	2	40	18.2	28	45	6	32	40	17.2	70	4	2	14	4
1/2 15	105	20	20	2	45	22.4	28	45	6	34	43	21.3	75	4	2	14	4
3/4 20	130	22	22	2	58	27.7	30	58	8	42	52	26.9	90	4	2	18	4
1 25	140	24	24	2	68	34.5	32	58	8	52	60	33.7	100	4	3	18	4
1 1/4 32	155	24	24	2	78	43.2	32	60	8	62	68	42.4	110	6	3	22	4
1 1/2 40	170	26	26	3	88	49.5	34	62	10	70	80	48.3	125	6	3	22	4
2 50	195	28	28	3	102	62	36	68	10	90	95	60.3	145	6	3	26	4
2 1/2 65	220	30	30	3	122	74.7	40	76	12	108	118	76.1	170	6	3	26	8
3 80	230	34	32	3	138	90.7	44	78	12	120	130	88.9	180	8	3	26	8
4 100	265	36	36	3	162	116.1	52	90	12	150	158	114.3	210	8	3	30	8
5 125	315	42	40	3	188	143.8	56	105	12	180	188	139.7	250	8	3	33	8
6 150	355	48	44	3	218	170.7	60	115	12	210	225	168.3	290	10	3	33	12
7 175	385	54	48	3	260	-	-	127	16	245	-	193.7	320	10	-	33	12
8 200	430	60	52	3	285	221.5	-	130	16	278	-	219.1	360	10	-	36	12
10 250	505	72	60	3	345	276.4	-	157	18	340	-	273	430	12	-	39	12
12 300	585	84	68	4	410	327.2	-	170	18	400	-	323.9	500	12	-	42	16
14 350	655	95	74	4	465	359.2	-	189	20	460	-	355.6	560	12	-	48	16
16 400	715	106	-	4	535	410.5	-	-	-	-	-	-	620	-	-	48	16
20 500	870	128	-	4	615	461.8	-	-	-	-	-	-	760	-	-	56	20



160/2  
250/2



Steel Welding Neck Flange



Steel Plate Slip-on Flange

160/3

BS4504: Part 1: 1969

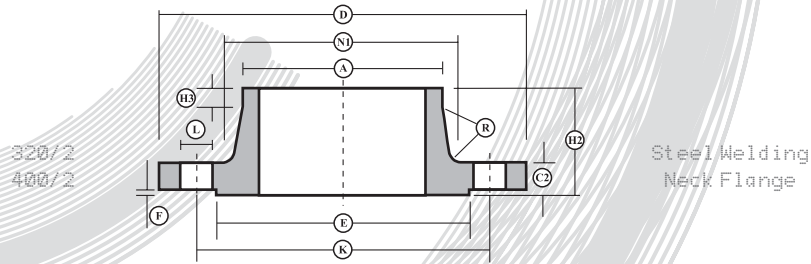
Dimensions of Nominal Pressure 160 Flanges

N B Size INS MM	D	C1	C2	F	B	E	H2	H3	N1	A	K	R	L	No. Holes
<sup>3</sup> / <sub>8</sub> 10	100	22	20	2	18.2	40	45	6	32	17.2	70	4	14	4
<sup>1</sup> / <sub>2</sub> 15	105	24	20	2	22.4	45	45	6	34	21.3	75	4	14	4
<sup>3</sup> / <sub>4</sub> 20	130	26	22	2	27.7	58	58	8	42	26.9	90	4	18	4
1 25	140	26	24	2	34.5	68	58	8	52	33.7	100	4	18	4
<sup>1</sup> / <sub>4</sub> 32	155	28	26	2	43.2	78	60	8	55	42.4	110	6	22	4
<sup>1</sup> / <sub>2</sub> 40	170	30	28	3	49.5	88	64	10	70	48.3	125	6	22	4
2 50	195	34	30	3	62	102	75	10	90	60.3	145	6	26	4
<sup>2</sup> / <sub>1</sub> 65	220	36	34	3	74.7	122	82	12	108	76.1	170	6	26	8
3 80	230	40	36	3	90.7	138	86	12	120	88.9	180	8	26	8
4 100	265	44	40	3	116.1	162	100	12	150	114.3	210	8	30	8
5 125	315	54	44	3	143.8	188	115	14	180	139.7	250	8	33	8
6 150	355	62	50	3	170.7	218	128	14	210	168.3	290	10	33	12
7 175	390	68	54	3	-	260	138	16	245	193.7	320	10	36	12
8 200	430	76	60	3	221.5	285	140	16	278	219.1	360	10	36	12
10 250	515	90	68	3	276.4	345	155	18	340	273	430	12	42	12
12 300	585	106	78	4	327.2	410	175	18	400	323.9	500	12	42	16

BS4504: Part 1: 1969

Dimensions of Nominal Pressure 250 Flanges

N B Size INS MM	D	C2	F	E	B	H2	H3	N1	A	K	R	L	No. Holes
<sup>1</sup> / <sub>2</sub> 15	130	26	2	45	22.4	60	6	48	21.3	90	4	18	4
<sup>3</sup> / <sub>4</sub> 20	135	28	2	58	27.7	65	6	55	26.9	95	4	18	4
1 25	150	28	2	68	34.5	65	8	60	33.7	105	4	22	4
<sup>1</sup> / <sub>4</sub> 32	165	32	2	78	43.2	75	8	74	42.4	120	6	22	4
<sup>1</sup> / <sub>2</sub> 40	185	34	3	88	49.5	80	10	84	48.3	135	6	26	4
2 50	200	38	3	102	62	85	10	95	60.3	150	6	26	8
<sup>2</sup> / <sub>1</sub> 65	230	42	3	122	74.7	95	12	124	76.1	180	6	26	8
3 80	255	46	3	138	90.7	102	12	136	101.6	200	8	30	8
4 100	300	54	3	162	116.1	120	14	164	127	235	8	33	8
5 125	340	60	3	188	143.8	140	16	200	152.4	275	8	33	12
6 150	390	68	3	218	170.7	160	18	240	177.8	320	10	36	12
7 175	430	74	3	260	-	170	22	270	219.1	355	10	39	12
8 200	485	82	3	285	221.5	190	25	305	244.5	400	10	42	12
10 250	585	100	3	345	276.4	215	30	385	298.5	490	12	48	16



BS4504: Part 1: 1969

Dimensions of Nominal Pressure 320 Flanges

N B Size INS MM	D	C2	F	E	H2	H3	N1	A	K	R	L	No. Holes
3/8 10	125	24	2	40	58	6	44	17.2	85	4	18	4
1/2 15	130	26	2	45	60	6	48	21.3	90	4	18	4
3/4 20	150	30	2	58	72	6	58	26.9	105	4	22	4
1 25	160	34	2	68	78	8	68	33.7	115	4	22	4
1 1/4 32	180	36	2	78	84	8	78	42.4	130	6	26	4
1 1/2 40	195	38	3	88	88	10	92	48.3	145	6	26	4
2 50	210	42	3	102	100	10	106	63.5	160	6	26	8
2 1/2 65	255	51	3	122	120	12	138	88.9	200	6	30	8
3 80	275	55	3	138	130	14	156	101.6	220	8	30	8
4 100	335	65	3	162	145	16	186	139.7	265	8	36	8
5 125	380	75	3	188	175	20	230	168.3	310	8	36	12
6 150	425	84	3	218	195	25	265	193.7	350	10	39	12
7 175	485	95	3	260	215	28	308	219.1	400	10	42	12
8 200	525	103	3	285	235	30	345	244.5	440	10	42	16
10 250	640	125	3	345	300	40	428	323.8	540	12	52	16

BS4504: Part 1: 1969

Dimensions of Nominal Pressure 400 Flanges

N B Size INS MM	D	C2	F	E	H2	H3	N1	A	K	R	L	No. Holes
3/8 10	125	28	2	40	65	8	48	17.2	85	4	18	4
1/2 15	145	30	2	45	68	8	56	26.9	100	4	22	4
3/4 20	160	34	2	58	78	8	72	33.7	115	4	22	4
1 25	180	38	2	68	90	10	82	42.4	130	4	26	4
1 1/4 32	205	44	2	78	100	10	90	48.3	150	6	30	4
1 1/2 40	220	48	3	88	110	12	106	60.3	165	6	30	4
2 50	235	52	3	102	120	15	120	76.1	180	6	30	8
2 1/2 65	290	64	3	122	135	18	158	101.6	225	6	33	8
3 80	305	68	3	138	150	20	174	114.3	240	8	33	8
4 100	370	80	3	162	175	25	216	139.7	295	8	39	8
5 125	415	92	3	188	200	30	258	193.7	340	8	39	12
6 150	475	105	3	218	225	35	302	219.1	390	10	42	12
8 200	585	130	3	285	280	40	388	273	490	10	48	16

Address: Evenort Ltd  
Houghton Road  
North Anston Trading Estate  
Sheffield  
S25 4JJ

Tel: 01909 569361  
Fax: 01909 550631

E-mail: [sales@evenort.co.uk](mailto:sales@evenort.co.uk)  
Web: [www.evenort.co.uk](http://www.evenort.co.uk)

Evenort Ltd are  
official agents for:

Hilton Metal Forgings Ltd  
701 Palm Spring  
Link Road  
Malad (West)  
Mumbai 400 064  
India

