



STAINLESS STEEL AND NICKEL ALLOY FLANGES

DIN 2632, 2633,
2576, 2566,
2642, 2527.



DIN 2632, 2633, 2576, 2566, 2642, 2527.

PN10 and PN16 Flanges



Dimensions of PN10 Flanges

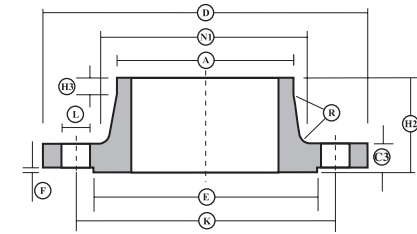
N B Size INS MM	D	C1	C2	C3	E1	B1	B	E	F	H1	H2	H3	N1	N2
3/8 10	90	14	14	14	3	19	17.7	40	2	20	35	6	28	30
1/2 15	95	14	14	14	3	24	22	45	2	20	35	6	32	35
3/4 20	105	16	14	16	3	30	27.6	58	2	24	38	6	40	45
1 25	115	16	16	16	4	36	34.4	68	2	24	38	6	45	52
1 1/4 32	140	16	16	16	4	46	43.1	78	2	26	40	6	56	60
1 1/2 40	150	16	16	16	4	54	49	88	3	26	42	7	64	70
2 50	165	18	16	18	5	65	61.1	102	3	28	45	8	75	85
2 1/2 65	185	18	16	18	5	81	77.1	122	3	32	45	10	90	105
3 80	200	20	18	20	5	94	90.3	138	3	34	50	10	105	118
4 100	220	20	18	20	5	119	115.9	158	3	38	52	12	131	140
5 125	250	22	18	22	5	145	141.6	188	3	-	55	12	156	-
6 150	285	22	18	22	5	173	170.5	212	3	-	55	12	184	-
7 175	315	24	-	-	-	-	196.1	-	-	-	-	-	-	-
8 200	340	24	20	24	5	225	221.8	268	3	-	62	16	235	-
10 250	395	26	22	26	5	279	276.2	320	3	-	68	16	292	-
12 300	445	26	26	26	5	329	327.6	370	4	-	68	16	344	-
14 350	505	28	28	26	6	374	372.2	430	4	-	68	16	385	-
16 400	565	32	32	26	6	426	423.7	482	4	-	72	16	440	-
18 450	615	38	-	-	-	-	462.3	-	-	-	-	-	-	-
20 500	670	38	38	28	6	517	513.6	585	4	-	75	16	542	-

Dimensions of PN16 Flanges

N B Size INS MM	D	C1	C2	C3	E1	B1	B	E	F	H1	H2	H3	N1	N2
3/8 10	90	14	14	14	3	19	17.7	40	2	20	35	6	28	30
1/2 15	95	14	14	14	3	24	22	45	2	20	35	6	32	35
3/4 20	105	16	14	16	3	30	27.6	58	2	24	38	6	40	45
1 25	115	16	16	16	4	36	34.4	68	2	24	38	6	45	52
1 1/4 32	140	16	16	16	4	46	43.1	78	2	26	40	6	56	60
1 1/2 40	150	16	16	16	4	54	49	88	3	26	42	7	64	70
2 50	165	18	16	18	5	65	61.1	102	3	28	45	8	75	85
2 1/2 65	185	18	16	18	5	81	77.1	122	3	32	45	10	90	105
3 80	200	20	18	20	5	94	90.3	138	3	34	50	10	105	118
4 100	220	20	18	20	5	119	115.9	158	3	38	52	12	131	140
5 125	250	22	18	22	5	145	141.6	188	3	-	55	12	156	-
6 150	285	22	18	22	5	173	170.5	212	3	-	55	12	184	-
7 175	315	24	-	24	-	-	196.1	242	3	-	60	12	210	-
8 200	340	24	20	24	5	225	221.8	268	3	-	62	16	235	-
10 250	405	26	22	26	5	279	276.2	320	3	-	70	16	292	-
12 300	460	26	26	28	5	329	327.6	378	4	-	78	16	344	-
14 350	520	28	28	30	6	374	372.2	438	4	-	82	16	390	-
16 400	580	32	32	32	6	426	423.7	490	4	-	85	16	445	-
18 450	615	38	-	-	-	-	462.3	-	-	-	-	-	-	-
20 500	715	38	38	34	6	517	513.6	610	4	-	90	16	548	-

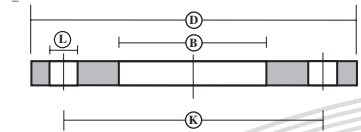
DIN 2632-PN10
DIN 2633-PN16

N B Size INS MM	A	K	R	L	No. Holes
3/8 10	17.2	60	4	14	4
1/2 15	21.3	65	4	14	4
3/4 20	26.9	75	4	14	4
1 25	33.7	85	4	14	4
1 1/4 32	42.4	100	6	18	4
1 1/2 40	48.3	110	6	18	4
2 50	60.3	125	6	18	4
2 1/2 65	76.1	145	6	18	4
3 80	88.9	160	8	18	8
4 100	114.3	180	8	18	8
5 125	139.7	210	8	18	8
6 150	168.3	240	10	22	8
7 175	-	270	-	-	8
8 200	219.1	295	10	22	8
10 250	273.0	350	12	22	12
12 300	323.9	400	12	22	12
14 350	355.6	460	12	22	16
16 400	406.4	515	12	22	16
18 450	-	-	-	-	-
20 500	508.0	620	12	26	20



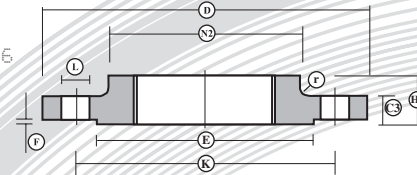
Steel
Welding
Neck
Flange

DIN2576
PN10 only



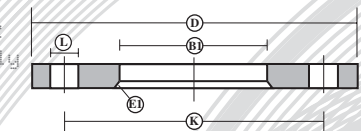
Steel
Plate
Slip-on
Flange

DIN2566



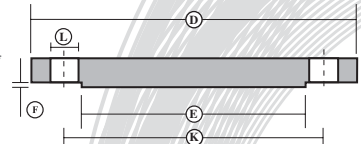
Screwed
Boss
Flange
Up to 100
only

DIN2642
PN10 only



Backing
Flange

DIN2527



Steel
Plate
Blind
Flange

N B Size INS MM	A	K	R	L	No. Holes
3/8 10	17.2	60	4	14	4
1/2 15	21.3	65	4	14	4
3/4 20	26.9	75	4	14	4
1 25	33.7	85	4	14	4
1 1/4 32	42.4	100	6	18	4
1 1/2 40	48.3	110	6	18	4
2 50	60.3	125	6	18	4
2 1/2 65	76.1	145	6	18	4
3 80	88.9	160	8	18	8
4 100	114.3	180	8	18	8
5 125	139.7	210	8	18	8
6 150	168.3	240	10	22	8
7 175	193.7	270	10	22	8
8 200	219.1	295	10	22	12
10 250	273.0	350	12	26	12
12 300	323.9	400	12	26	12
14 350	355.6	460	12	26	16
16 400	406.4	515	12	30	16
18 450	-	-	-	-	20
20 500	508.0	620	12	33	20